

NordicStove

Versatile | Effective | Non-Electric Oil Heat



Think warm.

When you need a trustworthy and versatile source of heat off the grid, look no further than NordicStove. NordicStove is efficient and dependable because it runs on oil – not electricity. Whether you are heating a boat, garage or cabin, it's easy to find the right model to meet your needs with the many options NordicStove offers.

FEATURES

- All NordicStove models operate without electricity
- Heavy stovetop allows all units to be used for cooking
- High-quality Toby oil control comes with built-in safety features
- Preset for #1 stove oil — unit can also burn #2 heating oil
- Combustion air inlet collar allows for sealed combustion
- Optional 3.75-gallon, plastic fuel tank and quick-connect hose are perfect for emergency or day use
- Wide-opening lid makes for easy lighting and cleaning



NordicStove | Versatile | Effective | Non-Electric Oil Heat



BASIC

If you're looking for a no frills heating system, here's the answer. The basic offers economical, effective heating for those applications that require versatility and durability at low cost. Perfect for tents, cabins and emergencies.



CONVECTOR

Similar to the basic, the convector offers the additional benefit of convection heating. Slots in the bottom and top of the convector cover create an airflow that increases the effectiveness of the heater.



DELUXE

Constructed of high-quality stainless steel, the deluxe offers maximum durability with improved appearance. Ideal for homes, cabins or boats and other harsh environments. Attractive convector cover is a standard feature.



RUSTIC

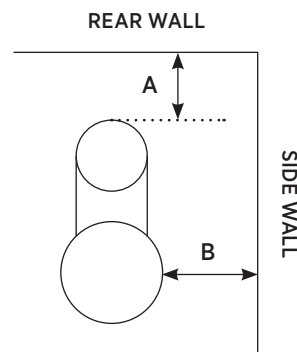
The rustic offers all the features of the deluxe with the addition of a window, allowing the warm glow of dancing flames to go out into your living area.

SPECIFICATIONS

MODEL	BTU OUTPUT	HEIGHT DIAMETER	WEIGHT LBS.	FLUE SIZE	ESTIMATED FUEL MIN/MAX
68	6,800	20" x 10"	14-17	3"	.035-.079 GPH
130	13,000	22" x 14"	18-23	4"	.053-.150 GPH
250	25,000	28" x 14"	29-32	5"	.079-.262 GPH
400	40,000	31" x 16"	60-65	6"	.122-.399 GPH

CLEARANCES

MODEL	(A) To Pipe	(B) To Wall
Basic 68	9 inches	15 inches
Deluxe 68	9 inches	15 inches
Basic 130	12 inches	23 inches
Deluxe 130	9 inches	16 inches
Basic 250	12 inches	23 inches
Deluxe 250	9 inches	16 inches
Rustic 250	9 inches	16 inches
Basic 400	13 inches	26 inches
Deluxe 400	12 inches	24 inches
Rustic 400	12 inches	24 inches



Flue connector pipe must be minimum 24 ga. black or 26 ga. blue stove pipe of the same size as the flue collar for the stove. Chimney must be all-fuel factory built ("A" vent) or masonry.